



Sandra Laubscher

Candidate Property Practitioner
Registered with PPRA
(FFC 202 371 484 97)
0660935321

sandra@redzproperties.co.za



Riette Buchner

Non-Principal Property Practitioner
Registered with PPRA

(FFC 202 374 134 0)

0748980630

riette@redzproperties.co.za

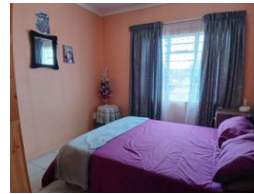
Contact REDZetc Eastern Cape

021 8813311

9 Nicolaas Cleeff Street
De Zalze Wine Estate
Stellenbosch
7600



Web Ref RL8059



R1,100,000

Monthly Bond Repayment R11,354.07

Calculated over 20 years at 11% with no deposit.

Transfer Costs R32,749.00 **Bond Costs** R25,220.00

These calculations are only a guide. Please ask your conveyancer for exact calculations.



Charming wooden home, with lots of room to expand

The perfect investment for first time buyers or retirees. A cosy wooden home, with an area for entertaining with a built-in braai.

Open-plan living, with kitchen, lounge and dining area. This home offers comfort and security with a large garden that leaves you with lots of space to expand and grow.

A safe and secure home, fenced all around and with a built-in alarm with backup battery system.

Make this home your own, with endless potential to expand and grow.

Features

Pets Allowed Yes

Interior
Bedrooms 4
Bathrooms 2
Kitchens 1
Recep. Rooms 2
Furnished No

Exterior
Carports / Parkings 1
Security Yes
Pool No

Sizes
Floor Size 191m²
Land Size 769m²

