



REAL ESTATE. REAL EXPERTS



Phil Birch
 Non-Principal Property Practitioner
 Registered with PPRA (FFC 202 322 197 7)
 0793830774

philb@redzproperties.co.za

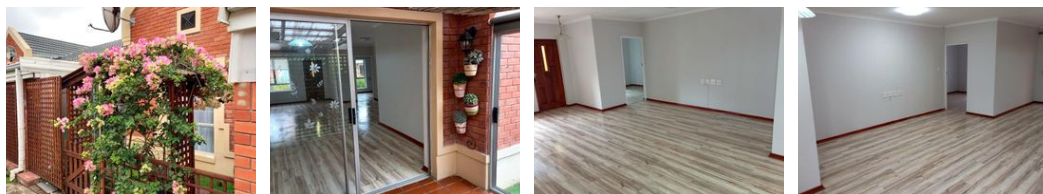
Contact REDZetc Western Cape

021 8813311

9 Nicolaas Cleeff Street
 De Zalze Wine Estate
 Stellenbosch
 7600



SOLE MANDATE Web Ref RL8068



R2,400,000

🛏️ 2 🚿 2 🚗 1

Monthly Bond Repayment R24,772.52
 Calculated over 20 years at 11% with no deposit.
Transfer Costs R105,552.00 **Bond Costs** R36,530.00
 These calculations are only a guide. Please ask your conveyancer for exact calculations.
Monthly Levy R1,799 **Monthly Rates** R976

Welcome to your Dream Retirement Home in George!

This 2- bedroom home offers the perfect blend of comfort and convenience.

Key features include the following:

- An open-plan lounge/dining room leading to an enclosed patio.
- A kitchen with a separate laundry area. An enclosed courtyard with a double washing line leads off from the kitchen.
- Two bedrooms, both with an en-suite bathroom (shower, basin and toilet)
- The single garage which has an automatic tip door, leads directly into the house.
- Community amenities include a dining room with a separate coffee nook. Meals are available to residents on request. A well stocked library offers a selection of books, DVDs, CDs and games. Other amenities include a lounge/reading room as well as a smaller venue used by residents for various pastimes.
- Maintenance free living as the Body Corporate takes...

Features

Pets Allowed	Yes				
Interior		Exterior		Sizes	
Bedrooms	2	Garages	1	Floor Size	113m ²
Bathrooms	2	Security	Yes	Land Size	113m ²
Kitchens	1	Pool	No		
Recep. Rooms	1	Views	False		
Furnished	No				
Extras					
Inverter Gas geyser					

